

*Collection*

# DENIM

*Technology*

Prosperity Textile  
Denim Portfolio

Powered by **PROSPERITY**  
TEXTILE

RE  INVENTSweet  
IndigoCarmine  
Blue

Bio-STRETCH™

Collection

X

Technology



ULTRA ⊕ STRETCH

CoFLEX™  
BY PROSPERITY TEXTILEJ-FIT™  
TRANS-FORM™F2 denim  
FIT & FUNCTIONCOFFEE™  
— DENIM —

SEAL DENIM



FEEL~IT™

D-LIGHT

heritage  
DENIM COLLECTION

<div>Collections</div> <div> <p><i>All of our fabrics are categorized into 9 collections from stretch to sustainable and from functional to soft touch and special texture. This is the basic of our product strategy.</i></p> </div>	CO-FLEX	Elongation lower than 40%
	ULTRA STRETCH	Elongation higher than 40%
	F2 DENIM	With thermal regulation, from quick dry to keeping warmth, and from anti-microbial to UV protection.
	RE INVENT	Sustainable materials like BCI, organic or recycled. Including cleaner dyeing like liquid indigo and Sweet indigo, too.
	D-LIGHT	Weight less than 7 oz. Mostly for shirting.
	FEEL IT	Anything with soft touch. Like super soft cotton, low-twist, TENCEL or Rayon.
	HERITAGE	Traditional styles and rugged/masculine looks. 100% cotton and rigid.
	SEAL DENIM	With coating or overdyed finishing.
	Indigo Knit	Circular knitting denim or woven knit-like denim.
<div>Technologies</div> <div> <p><i>We uses a variety of innovative technologies, from raw materials to dyeing and finishing. It delivers unique selling points and excellent performance.</i></p> </div>	J-FIT	Fiber J inside. Easier to stretch and less pressure. Easy On, Easy Off.
	TRI-X	Triple-core covering technology. Stretchy and with great recovery.
	SWEET INDIGO	Free-of-hydrosulfite dyeing technology with organic reducer.
	COFFEE DENIM	S.Café inside from recycled coffee grounds. Quick-dry, Anti-odor and UV protection.
	BIO-STRETCH	SORONA inside. 37% of the raw materials of the fiber are sustainably sourced and it also presents better recovery.
	AIR-LITE	A special sponge yarn inside. Looks quite compact and distinct, yet feels light and comfortable.
	C-BLEND	Lyocell + Cotton. Softer and more resilient.
	BLUE FORCE	Dyneema inside. Ultra anti-abrasion and with super-high tearing and tensile strength.
	360 STRETCH / TRANSFORM	4-way stretch technology, with good elongation on both warp and weft.



# STRETCH

## CO-FLEX

We combine cotton and advanced stretch technology to apply just the right amount of stretch on the fabric. The result is 15 - 40% elongation, authentic denim look, good shrinkage control and fit for men and women both.

## ULTRA STRETCH

The Stretchiest Denim Hits, from 40%, 60% to 100%. It provides the assurance of super stretch performance and long-lasting comfort for better fit, body shaping and extreme freedom of movement, making it the perfect choice for super skinny fits.



## ULTRA ⊕ STRETCH

STRETCH YOUR IMAGINATION



# FUNCTIONAL

## F2 DENIM

Our award-winning functional denim build for 24/7 fashion comfort. It helps you stay dry, stay cool, stay warm and stay protected. From street to sporty and outdoor, it is comfort for every moment. ◦

# SUSTAINABLE

## REINVENT

As the only denim mill in China that joined bluesign® system, we increase the use of sustainably sourced materials, change to clean dyeing technologies, install a solar power system and ETP, to offer a wide range of sustainable denim fabrics with less impact to the environment.

RE  INVENT



**F2** denim  
**FIT & FUNCTION**

**PERFORMANCE DENIM  
COMFORT ALL DAY LONG**





# TOUCH & TEXTURE

## FEEL IT

It uses super soft cotton and innovative fibers on the inside of the fabric that delivers ultra-soft touch and upgraded comfort, eliminating the need of additional softening process. Just Feel It.

## D-LIGHT

Over 400 articles of lightweight denim with weight less than 7oz, from cotton to blended, from twill to chambray, from clean indigo to dark black. A perfect fit for denim shirting.

## HERITAGE

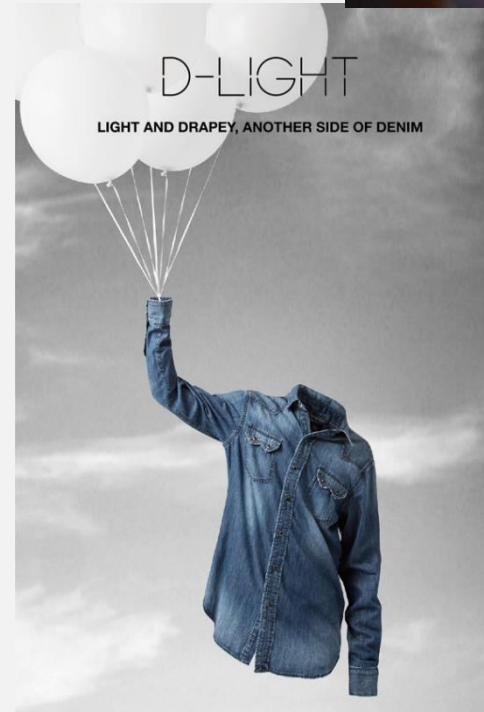
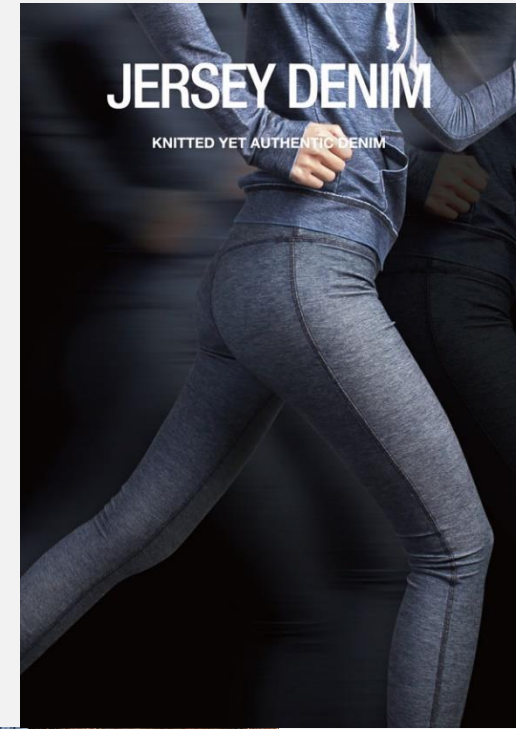
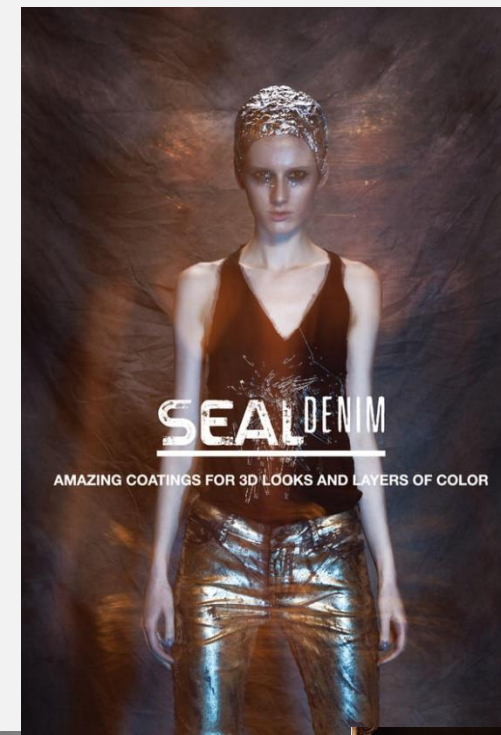
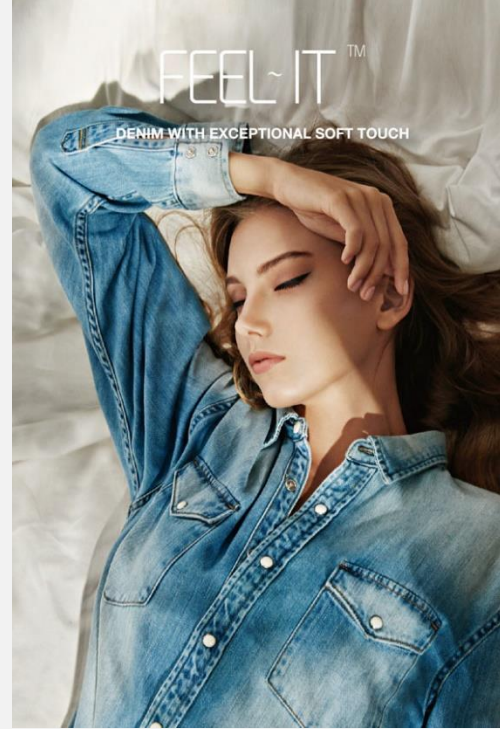
Made of the tough, raw and rigid denim. It doesn't just look rugged and masculine...it feels so comfortable by building stretch technology right in to the fabric.

## SEAL DENIM

A place of infinite possibilities. Featuring the latest coating and overdyed technologies, we present a new denim collection with 3D effects, refined textures, deep and saturated shades.

## INDIGO KNIT

A perfect blend of Knitting and Denim. It is incredibly soft, breathable, 4-way stretch, and without sacrificing the true denim look.



# STRETCH | TECH

## J-FIT™

### J-FIT

The revolutionary Stretch Experience

1/3

Easier to stretch

70%

Super Stretch

30%

Better Breathability

## TRANS-FORM™

### TRANS-FORM

4-way Power Stretch

360

Stretch

Fit2

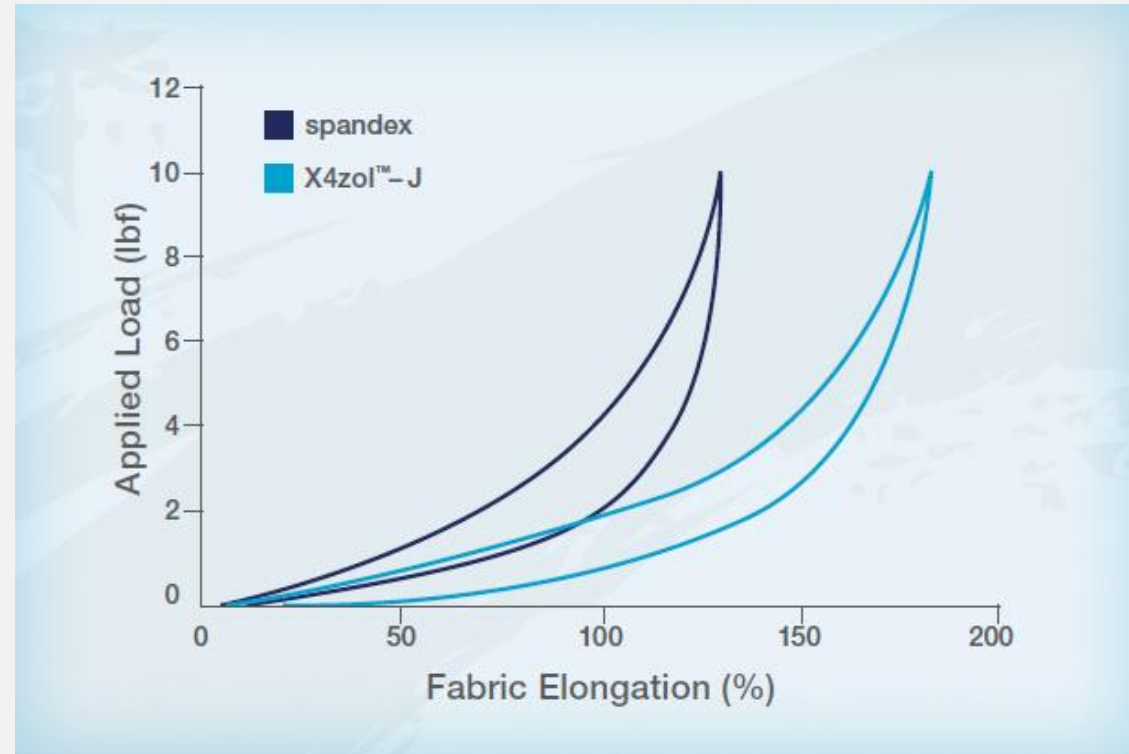
Technology

Second Skin

Soft touch

It's a revolutionary stretch fabric, J-Fit, with less forces needed to reach super stretch compared to commonly-used spandex. The letter "J" perfectly presents the much smoother curve when you measure the stretch and the force applied to the fabric. Easier to stretch means less pressure on body to move the way you like. Easy On, Easy Off.

- ✓ Balanced stretch for enhanced fit
- ✓ Comfortable compression
- ✓ Thinner, stronger and more durable
- ✓ Breathable
- ✓ Solvent-free process
- ✓ Chlorine resistance



*\*Source: Lubrizol*



Upgraded 360 Stretch

## **TRANS-FORM technology**

---

The Trans-Form collection is “the next generation fit and comfort,” utilizing denim fabrics with Creora Fit2 technology.

The technology was designed to feel like a “second skin,” featuring 4-way stretch with reduced shrinkage and better recovery.

“We know that flattering fit continues to be the most important consumer need in denim. As new technologies emerge, standards for fit are evolving. We developed this new Trans-Form collection as our next generation offering for more sculpted and streamlined looks,” said Prosperity Creative Director Bart Van de Woestyne

**TRANS-FORM™**

# SUSTAINABLE & FUNCTIONAL | TECH

*Sweet  
Indigo*

## SWEET INDIGO

Cleaner Dye. Fresher Indigo

Organic

Dye additives

Free

Of hydrosulfite

Clean

Water

**COFFEE**<sup>™</sup>  
— DENIM —

## COFFEE DENIM

Drink it. Wear it.

Recycled

Sourced from  
coffee grounds

SPF50

UV Protection

85%

Anti-odor

*Bio*-STRETCH<sup>™</sup>

## BIO-STRETCH

Eco. Comfort. No bagging.

30%

Renewably-based  
ingredients of the  
stretch fiber

60%

Fewer  
emissions

20%

Better fabric  
recovery  
performance

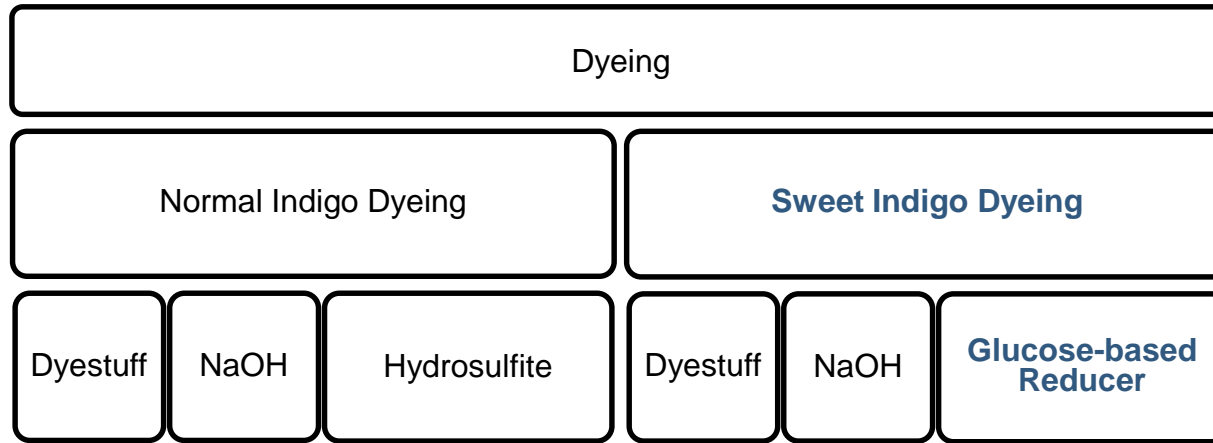


Beam for Dye

Washing

Washing

Dry



SWEET INDIGO is a brand new hydrosulfite-free dyeing technology, which we use a new Glucose-based reducer to help cut the COD level of waste water.

Clean water, Fresh Indigo.



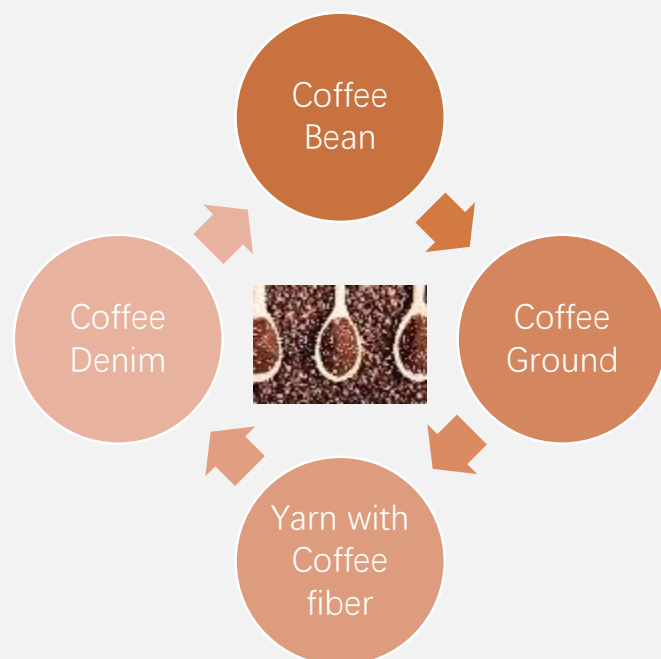


# Drink it. Wear it

## Coffee Denim

Recycled from the coffee ground.

Denim fabrics with quick dry, anti-odor and UV protection performance, awarded the Top 10 of ISPO TEXTRENDS 18/19.



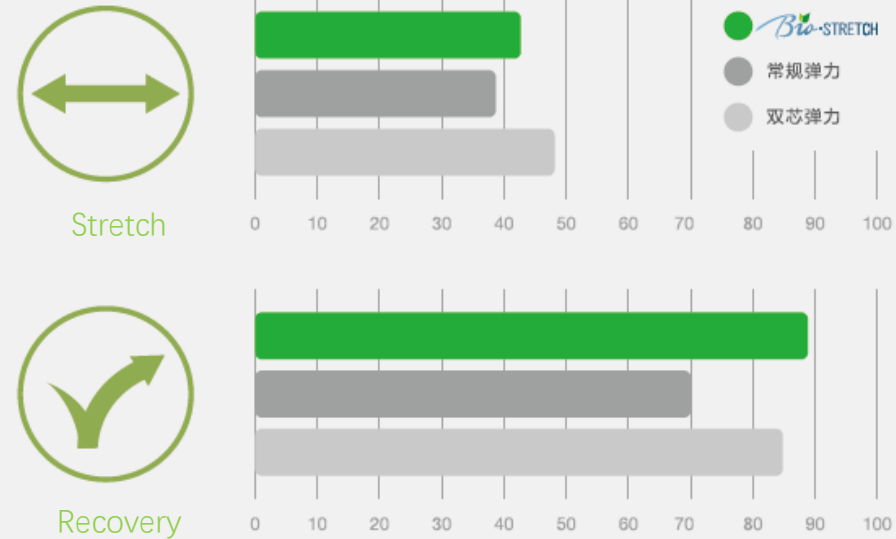
\*Source: S.Cafe

Eco. Comfort. No bagging.

## BIO-STRETCH

With the plant-based stretch fiber, Bio-Stretch™ collection reduces impact to the environment by cutting greenhouse gas emissions by 60%.

It offers soft touch, comfort stretch and 20% better recovery compared to normal spandex stretch. You will look good and fit all day long without losing the shape.



**-60% GHG**  **>30%**

\*Source: SORONA

# TOUCH & TEXTURE | Tech



## AIR-LITE

Looks heavy. Feels Light

Sponge 10%

-like yarn

Less weight

Lighter

Touch and soft feeling



## C-BLEND

The new-age Comfort

50%

Softer than cotton

Easy-care Resilient

Better wrinkle recovery

True-denim looks



## BLUE FORCE

Built for Strength

Dyneema® 100% 200%

The world's strongest fiber™

Better anti-abrasion

Better strength

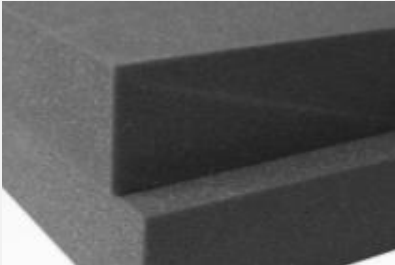




Air-Lite uses a special cotton yarn on the inside of the fabric that makes the heavy and firm looks, but with a super lightweight hand feel, 10% lighter than other similar cotton items, making you feel more comfortable.

Fabric	Content	Warp Weft	Weave	Width	Weight (BW)
AIR-LITE RA3933A	100% CTN	7SB	3/1 Z TWILL	62/63	10.5
Similar fabric	100% CTN	7SB	3/1 Z TWILL	62/63	11.6

*We called it  
Sponge Yarn.*





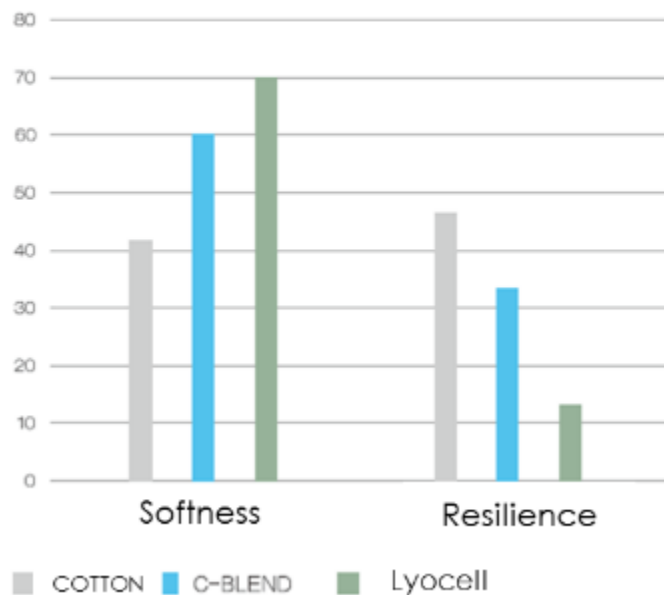
莱赛尔纤维

+



纯棉

||



## C-BLEND

Size:50mm\*50mm



Front



Back

# C-BLEND, Soft Resilience

## 50% softer than cotton

## Tough Denim. Built for Strength

# BLUE FORCE

---

Tough, durable and with exceptional wearing-resistant performance, Blue Force provides upgraded protection.

- Dyneema® inside, world's strongest fiber
- 100% better anti-abrasion\*
- 200% better tearing/tensile strength\*
- Light and versatile
- Awarded Top 10 of ISPO TEXTRENDS

*\*Data is based on internal tests.*





A full-page background image featuring two models against a vibrant red, vertically-ribbed wall. The model on the left is wearing a long olive-green trench coat over a denim shirt and a white crop top with the text 'EAT X' visible. The model on the right is wearing a dark jacket with a bright orange interior lining, a black t-shirt, and blue jeans. A white horizontal banner with the text 'THANKS FOR YOUR ATTENTION' is centered across the middle of the image.

THANKS FOR YOUR ATTENTION

*Prosperity Textile, 2017*